

## YUVIO TWIN

### TRACK LIGHTS

YUVIO TWIN is as unique as your store concept: designed to match the YUVIO TRACK spotlight range - and with a special technology for directing light that stands out visibly. YUVIO works with free-form lenses, combining the advantages of reflector and lens technology in a striking aesthetic. Thanks to two flexibly adjustable luminaire heads, even high lumen packages are no problem.



#### Unique free-form lenses

Concise, precise, wide and homogeneous light distribution with high-quality brilliance



#### Specialized in corridors and walls

Oval light distribution, ideal for wide-area illumination



#### Dual benefit

Thanks to the two light heads, also convincing in combination as aisle and wall lighting (horizontal and vertical)



#### Position accuracy

Thanks to an already integrated locking mechanism, Yuvio Twin guarantees absolute parallelism to the track – for a clear ceiling image and optimum position to the illuminated object

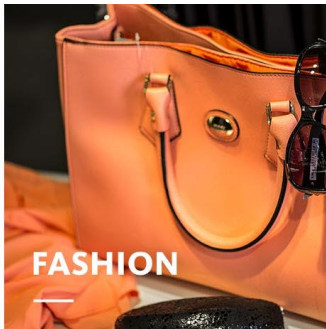


#### Intelligent light

LED<sup>IQ</sup> for your smart lighting management; controls from switchable, DALI, Bluetooth to BLE



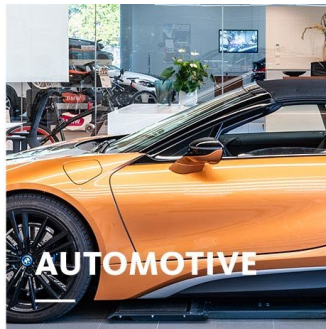
FOOD



FASHION



SHOP



AUTOMOTIVE

## YUVIO TWIN

[www.oktalite.com/yuvio-twin](http://www.oktalite.com/yuvio-twin)

Luminaire type	Track lights
Application areas	General ambient lighting, product aisles, rear walls
Range of action	Can be rotated through 314° and swiveled 30° to each side
Fastening	3P conductor rail, not suitable for vertical mounting
Lighting technology	LED, LED IQ DALI, LED IQ BLE
Beam angle	Oval
LED luminous flux class	2 x 2000 lm - 2 x 5000 lm
Light colour CRI 80	2700 K, 3000 K, 3500 K, 4000 K
Light colour CRI 90	3200 K - Efficient White, 4000 K - Efficient Cool
Supply unit	Integrated driver
	RAL 9005 jet black
Luminaire colour	RAL 9006 white aluminum
	RAL 9016 traffic white
	Special colours on request
Surface	structure powder-coated
Nominal voltage	220 - 240 V, 50/60Hz
Weight	approx. 2.5 kg
Test mark	