



LENTY TRACK

TRACK LIGHTS

LENTY TRACK excels with a light appearance that highlights goods and surfaces more pointedly than ever before. Interior design arrangements and individual products alike – this discreet luminaire is a multi-talent in targeted illumination. The small trend spotlight featuring specially developed lens technology scores points with excellently focused light quality in the fashion sector, among others. Be it fashion or surfaces: its core light, which is brighter compared to reflector spotlights, makes target objects stand out more vividly and sharply from their surroundings, enabling new lighting concepts. The luminaire is equipped with a CRI above 90 in all light colours and provides intense highlights at small lumen packages.



Lens technology instead of reflector technology

More concentrated and directed light on the target surface



Set highlights

High light intensity at 1000, 1500 or 2000 lm; Beam angle from spot, medium flood to flood



CRI > 90 for all light colours

Authentic illumination with Brilliant Food, Efficient White or Efficient Cool and more



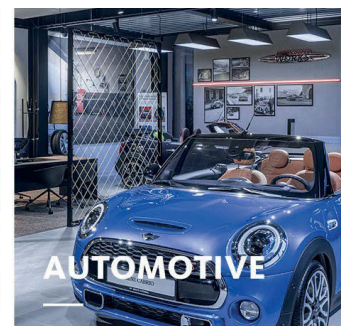
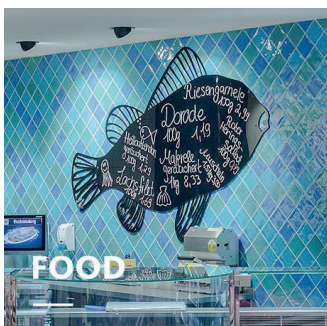
Compatible with shop, office, gastronomy and architecture

Multi-functional in white or black, with a white or black front ring



Intelligent light

LED^{IQ} for your smart lighting management; controls from switchable, DALI to Bluetooth LE



LENTY TRACK

www.oktalite.com/lenty-track

Luminaire type	Track lights
Application areas	Accent lighting
Range of action	Can be rotated through 355° and swiveled through 100
Fastening	3P conductor rail, not suitable for vertical mounting
Lighting technology	LED, LED IQ DALI, LED IQ BLE
Beam angle	Spot, Medium Flood, Flood
LED luminous flux class	1000 lm - 2000 lm
Light colour CRI 80	3000 K, 4000 K
Light colour CRI 90	3100 K - Brilliant Color, 3200 K - Efficient White, 3500 K, 4000 K - Efficient Cool
Light colour Food	2700 K - Brilliant Food
Supply unit	Track Driver 3PTD Invisible Driver 3PID (Coming soon)
Luminaire colour	RAL 9005 jet black RAL 9016 traffic white Special colours on request
Surface	Structure powder-coated, polycarbonate (PC)
Nominal voltage	220 - 240 V, 50/60Hz
Weight	approx. 0.7 kg
Test mark	