



CANILO PLUS

TRACK LIGHTS

CANILO Plus is the power package of the Canilo luminaire family. With up to 7000 lumens, it can be used wherever high output is required - in rooms with high ceilings, for example, or where strong accents and a dramatic interplay of light and shadow are desired.



Power package

White light colours up to 7,000 lm, special light spectra for the fresh food sector up to 4,000 lm



Elegant design

Classic design with elegant proportions - CANILO blends into any store design



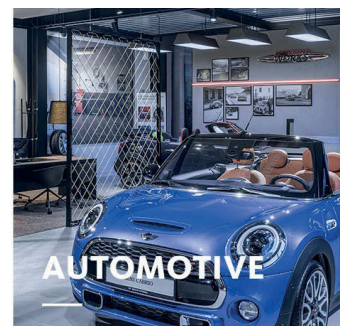
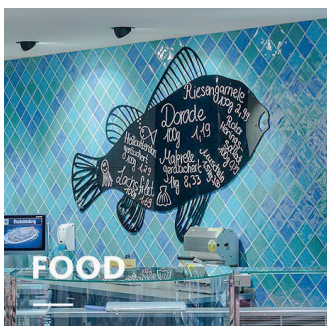
Well protected

Optional glass panel to protect against soiling



High visual comfort

Always black anti-glare ring offers extremely high visual comfort as a design element



CANILO PLUS

www.oktalite.com/canilo-plus

Luminaire type	Track lights
Application areas	High decoration, accent lighting
Range of action	Can be rotated through 355° and swiveled through 200
Fastening	3P conductor rail, not suitable for vertical mounting
Lighting technology	LED, LED IQ DALI, LED IQ BLE
Beam angle	Spot, Medium Flood, Flood, Wide Flood, Very Wide Flood
LED luminous flux class	3000 lm - 7000 lm
Light colour CRI 80	2700 K, 3000 K, 3500 K, 4000 K
Light colour CRI 90	3100 K - Brilliant Color, 3200 K - Efficient White, 4000 K - Efficient Cool
Light colour Food	2700 K - Brilliant Food, Meat, Meat + Fish
Supply unit	Integrated driver
Luminaire colour	RAL 9005 jet black
	RAL 9006 white aluminum
	RAL 9016 traffic white
	Special colours on request
Surface	structure powder-coated
Nominal voltage	220 - 240 V, 50/60Hz
Weight	approx. 3.0 kg
Test mark	