



SISTEMA COMPACT

SYSTEM | RECESSED LUMINAIRES

Compact, flexible, modular - SISTEMA

COMPACT impresses with completely tool-free installation from the frame to the light module.

The rectangular spotlight fits perfectly into a modern store concept.



Various sizes

Single-cell or twin-cell recessed spotlights for retail applications, installation openings: 160x1600 mm (single-cell) and 160x300 mm (twin-cell)



Simple installation

Tool-free assembly of right-angled frames and gimbal modules



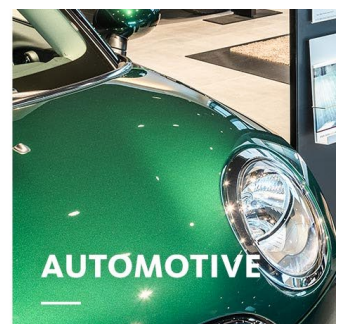
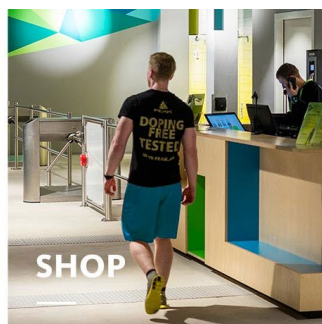
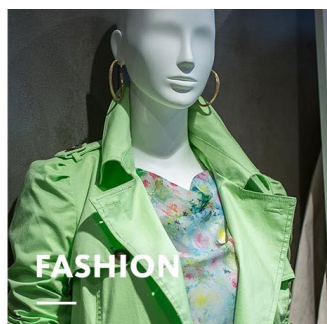
Large LED selection

Available in four white light colors as well as the special light colors Efficient White and Brilliant Colour



Calm ceiling image

Adapts neutrally and objectively to any store design



SISTEMA COMPACT

www.oktalite.com/sistema-c

Luminaire type	System Recessed luminaire
Application areas	Accent lighting, ambient lighting
Range of action	Can be rotated through 355° and swiveled through 90
Fastening	Spring fastening
Ceiling thickness	1-25 mm
Ceiling cut-out	160 x 160 mm, 160 x 300 mm
Lighting technology	LED, LED IQ DALI, LED IQ BLE
Beam angel	Spot, Medium Flood, Flood, Wide Flood, Very Wide Flood
LED luminous flux class	2000 lm - 5000 lm
Light colour CRI 80	2700 K, 3000 K, 3500 K, 4000 K
Light colour CRI 90	3100 K - Brilliant Color, 3200 K - Efficient White, 4000 K - Efficient Cool
Supply unit	Separate driver RAL 9005 jet black
Luminaire colour	RAL 9006 white aluminum RAL 9016 traffic white Special colours on request
Surface	structure powder-coated
Nominal voltage	220 - 240 V, 50/60Hz
Weight	1-celled = approx. 1.2 kg, 2-celled = approx. 2.2 kg
Test mark	