



JUNO

Suspended luminaires

The JUNO product family is a strong trio with the addition of the pendant luminaire. The luminaire, which has won awards for its successful combination of design and light control, provides outstanding retail lighting in every version. It is also ideal as an all-rounder for complete store lighting: Basic illumination, product range and aisle lighting with the TWIN version or even the accentuation of counters and tables can be tailor-made with this luminaire. The trademark of JUNO, its visible yet glare-free light from the free-form lens, can be experienced more directly with the pendant luminaire.



Optimum light distribution

Accurate light control of the free-form lens thanks to Oktalite reflector DNA



Ideal applications

Pendant luminaire plus track spotlight - all-round light for goods and architecture



New design language

Filigree, elegant appearance and exciting long-distance effect thanks to drop-shaped lens



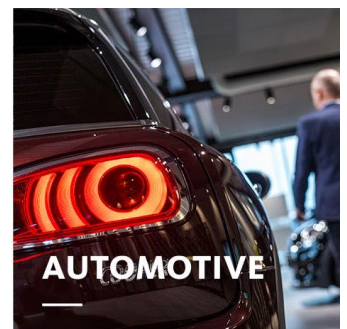
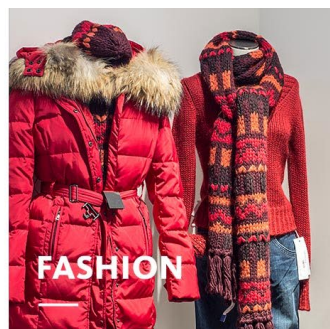
Easy alignment

Fine adjustment of the pendant length on the ceiling attachment from 0 to 1.5 meters or 1.5 to 3 meters



Intelligent light

Simply digital: LED^{IQ} makes lighting control very easy



JUNO

www.oktalite.com/juno

Luminaire type	Suspended luminaires
Application areas	Decorative lighting
Range of action	rigid
Fastening	3P conductor rail, structure
Pendulum length	1500 mm, 3000 mm
Lighting technology	LED, LED IQ DALI, LED IQ BLE
Beam angel	Oval
LED luminous flux class	2000 lm, 3000 lm
Light colour CRI 80	2700 K, 3000 K, 4000 K
Light colour CRI 90	3200 K - Efficient White, 4000K Efficient Cool
Supply unit	Integrated driver
Luminaire colour	RAL 9005 jet black RAL 9016 traffic white Special colours on request
Surface	structure powder-coated
Nominal voltage	220 - 240 V, 50/60Hz
Weight	approx. 2.2 kg
Test mark	