



LENTY

RECESSED LUMINAIRES

The elegant lens spotlight also scores highly in the recessed version. Its excellently controlled illumination combined with its small design and flexibility make LENTY a popular highlight luminaire in the fashion sector and beyond. Stores such as opticians, jewelers and acousticians with their often low and medium ceiling heights also benefit from its high-quality lens technology. The lens of LENTY has been offset backwards by around 20 mm so that it disappears into the luminaire head for the observer - which significantly minimizes glare. The spotlight head with its matt black front ring can also be swiveled out by up to 50° and rotated by up to 355° - enabling concentrated, three-dimensional illumination of products and surfaces of all shapes and sizes.



Lens technology instead of reflector technology

More concentrated and directed light on the target surface



Set highlights

High light intensity at 1000, 1500 or 2000 lm; Beam angle from spot, medium flood to flood



For all light colors CRI > 90

Authentic lighting with Brilliant Food, Efficient White or Efficient Cool, among others



Compatible for store, office, architecture

Multifunctional in white or black, front ring always black

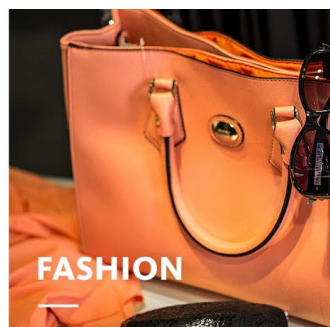


Intelligent light

LED^{IQ} for your smart lighting management; controls from switchable, DALI to Bluetooth LE



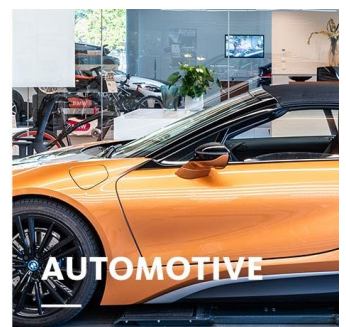
FOOD



FASHION



SHOP



AUTOMOTIVE

LENTY

www.oktalite.com/lenty

Luminaire type	Recessed luminaires
Application areas	Accent lighting
Range of action	Can be rotated through 355° and swiveled out 50
Fastening	Folding spring
Ceiling thickness	1-25 mm
Ceiling cut-out	100 mm
Lighting technology	LED, LED IQ DALI, LED IQ BLE
Beam angel	Spot, Medium Flood, Flood
LED luminous flux class	1000 lm - 2000 lm
Light colour CRI 90	2700 K, 3100 K - Brilliant Color, 3200 K - Efficient White, 3500 K, 4000 K - Efficient Cool
Light colour Food	2700 K - Brilliant Food
Supply unit	Integrated driver
Luminaire colour	RAL 9005 jet black RAL 9016 traffic white Special colours on request
Surface	structure powder-coated
Nominal voltage	220 - 240 V, 50/60Hz
Weight	approx. 0.7 kg
Test mark	